

125 D

OVERVIEW

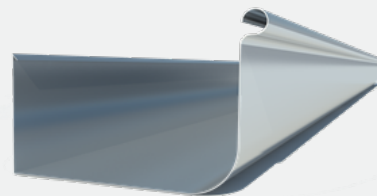
The 125 D Gutter is a durable profile that provides a stylish finish and a high water carrying capacity.

CROSS SECTIONAL AREA

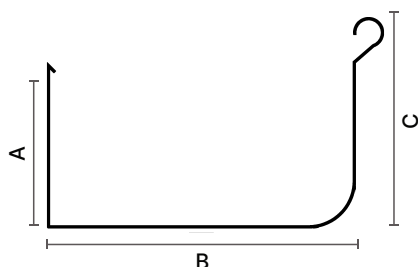
8250mm²

LARGEST OUTLET

100mm



PROFILE



- A = 60mm
- B = 131mm
- C = 90mm

* Visit revbydesign.com.au for CAD & Revit Files

AVAILABILITY

LOCATION



SOUTH AUSTRALIA



VICTORIA

MATERIAL & GUAGE

- 0.55 BMT

- Zinalume® AM125
- COLORBOND® Steel
- COLORBOND® Steel Matt
- Heritage Galvanised
- Nexalume™ AZ150
- NEXTEEL NextSTAR™
- NEXTEEL NextSTAR™ Matt

INSTALLATION

EXTERNAL BRACKET

Available

INTERNAL BRACKET

Available

SUPPORTING SPACING

1000mm

RECOMMENDED FALL

1 in 500mm

SLOTING AVAILABLE

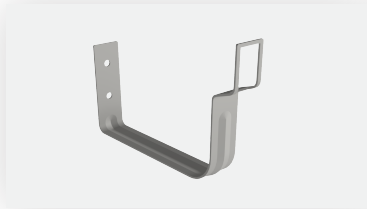
Yes

PROTECTIVE PLASTIC

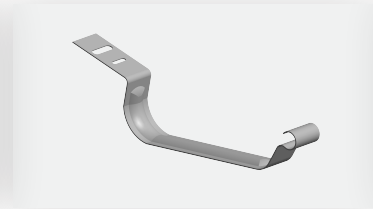
Yes

PRODUCT SPECIFIC ITEMS

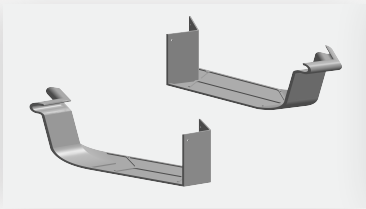
EXTERNAL BRACKET



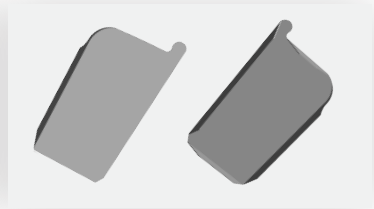
INTERNAL BRACKET



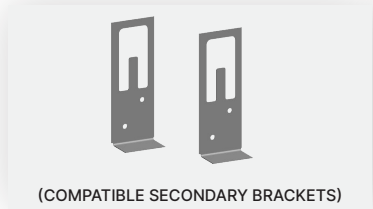
CAST MITRES



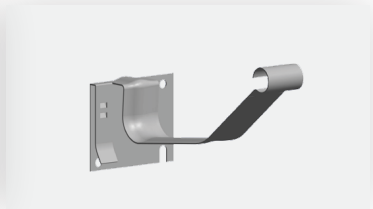
STOP ENDS



P CLIPS



ALL IN ONE



STANDARD SPECIFICATION

ZINCALUME® AM125

Steel base thickness (0.55) with an Aluminium Zinc Magnesium Alloy Coated Steel Coating. Zincalume AM125 Substrate compliance AS 1397:2021, 125g per square metre minimum Metallic Coating Mass.

SUBSTRATE	Aluminium Zinc Magnesium Alloy Coated Steel - AS 1397:2021
COATING	AM125 = 125g per m² Minimum Metallic Coating Mass

NEXALUME™ AZ150

Steel base thickness (0.55) with a Hot-Dipped Aluminium Zinc Magnesium Alloy Coating. Nexalume AZ150 Substrate compliance AS 1397:2021, 150g per square metre minimum Metallic Coating Mass.

SUBSTRATE	Hot-Dipped Aluminium Zinc Magnesium Alloy Coated Steel - AS 1397:2021
COATING	AZ150 = 150g per m² Minimum Metallic Coating Mass

COLORBOND® STEEL AM100

RELEVANT FOR COLORBOND® STEEL, COLORBOND® MATT STEEL PRODUCTS

Steel base thickness (0.55) with an Aluminium Zinc Magnesium Alloy Coated Steel with Activate® Technology Coating. COLORBOND® Steel AM100 Substrate compliance AS 1397:2021, and Paint Finish Substrate compliance AS/NZS 2728:2013 Type 3.

SUBSTRATE	Aluminium Zinc Magnesium Alloy Coated Steel with Activate® Technology - AS 1397:2021
COATING	AM100 = 100g per m² Minimum Metallic Coating Mass
PRIMER	Nominal 5µm Universal Corrosion Inhibitive Primer
PAINT	Nominal 20µm Finish Coat AS/NZS 2728:2013 Type 3
PROTECTIVE PLASTIC	Nominal 50µm CORSTRIP® (if required)

NEXTEEL™ AM100

RELEVANT FOR NEXTSTAR™, NEXTSTAR™ MATT STEEL PRODUCTS

Steel base thickness (0.55) with an Aluminium Zinc Magnesium Alloy Coated Steel Coating. NEXTEEL™ AM100 Steel Substrate compliance AS 1397:2021, and Paint Finish Substrate compliance AS/NZS 2728 Type 4.

SUBSTRATE	Aluminium Zinc Magnesium Alloy Coated Steel - AS 1397:2021
COATING	AM100 = 100g per m² Minimum Metallic Coating Mass
PRIMER	Nominal 5µm Polyester
PAINT	Nominal 20µm Advanced Durability Polyester AS/NZS 2728 Type 4
PROTECTIVE PLASTIC	Nominal 50µm NextSTRIP (if required)