

REVOLUTION
EuroPlus
SERIES



FLAT LOCK PANEL

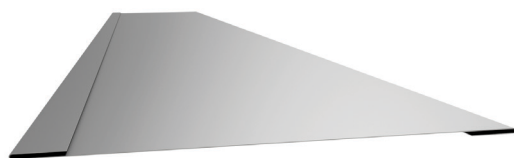
Revolution
BY DESIGN

DATA SHEET

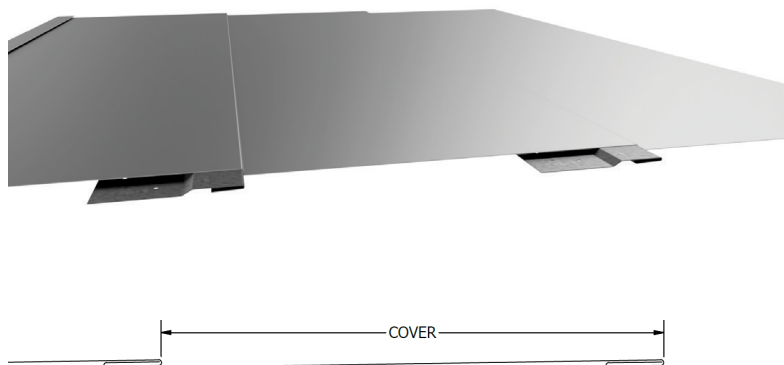
FLAT LOCK PANEL

The latest addition to the innovative Revolution by Design product range, EuroPlus Flat Lock Panel is part of the exciting EuroPlus Series. A versatile concealed fixed wall cladding can offer easy solutions to difficult projects.

Available in a wide range of finishes and thicknesses the Flat Lock Panel is another excellent choice in the EuroPlus Series.



FLAT LOCK SINGLE



FLAT LOCK 2D COVER

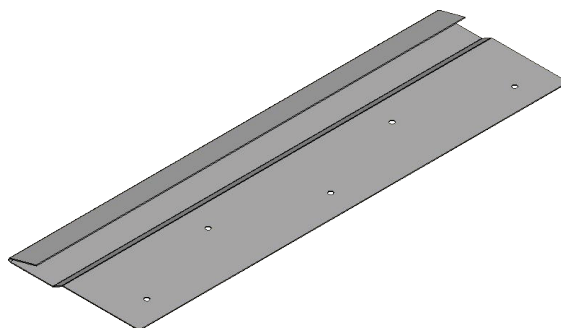
Standard Cover	310mm	410mm	485mm
Variable Cover	130mm minimum		510mm maximum
Joint Overlap	30mm		
Fixing Orientation	Vertical		Horizontal
Maximum Length Vertical	5000mm		
Maximum Length Horizontal	4000mm		
Available Finishes	Metallic 0.55 BM G300 Heritage Galvanised COLORBOND® 0.55 BMT G300 COLORBOND® ULTRA 0.55 BMT G300 NEXTEEL™ NextSTAR 0.55 BMT G300 NEXTEEL™ NextSTAR ULTRA 0.55 BMT G300 <i>Minimum Roll Length 600mm</i>		

SUBSTRUCTURE DETAILS

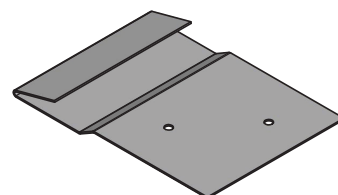
Flat Lock Panel to be installed on a plywood substrate ensuring the joints of the plywood is flush and there is a separation barrier placed between the Flat Lock and plywood to avoid condensation.

Flat Lock Panels can be curved when used in a vertical clad application; please consult Revolution by Design Technical Department for further details.

INSTALLATION DETAILS



FLAT LOCK CLIP LARGE



FLAT LOCK CLIP SMALL

Oil Canning is an inherent characteristic of gauge cold formed metal products, particularly products with broad flat areas. The Architect, Builder, and Homeowner needs to be aware that oil canning may affect the overall aesthetic outcome. There are measures that can be taken during design and installation to minimise the risk of oil canning such as the plywood being flush, limiting the continuous length of each panel, choosing lighter colours, selecting heavier gauges or using a matte finish as opposed to a standard colour. For more information please go to our website, revbydesign.com.au